



# RAZ-IR MAX-SL

## The Smart Choice!

The RAZ-IR MAX-SL is an easy to use and powerful thermal infrared camera. The RAZ-IR series of infrared cameras from SPI CORP are in use around the world in some of the most demanding environments. The MAX-SL is the entry level model designed to give you maximum value for your thermal imaging budget. The key to any thermal imager is of course the image quality of the sensor. That is why the MAX-SL makes use of full resolution imaging sensors. Other entry level cameras use fractional sensors with odd resolutions of 120x120, 80x60 or even 60x60. The MAX-SL provides a full native 160x120 pixel resolution and operates at full real time 60hz imaging rate (those other cameras are usually only giving you 7-8 frames a second). There is no excuse for choppy low resolution thermal video when you can have the MAX-SL. Full range temperature measurement is yours with the MAX-SL from 0-250C while other cameras only measure to 100C. Of course the MAX-SL is a potent thermal analysis instrument that includes post processing software. Easily download radiometric JPEG images for analysis via USB or removeable SD Card. Other cameras have interal storage that limits your capabilities while the MAX-SL lets you change SD cards for unlimited storage. Finally, the MAX-SL operates on AA rechargeable batteries instead of proprietary internal batteries so you never have to stop scanning. The RAZ-IR MAX-SL gives you more than any other camera but costs you less. Invest in a RAZ-IR MAX-SL, the SMART CHOICE!

### SMART FEATURES

#### AA BATTERIES

Common AA rechargeable batteries so you are never stuck with a dead thermal camera.

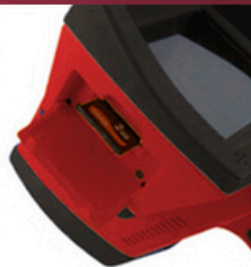
**SAY NO TO PROPRIETARY BATTERIES, SAY YES TO FREEDOM!**



#### SD CARD REMOVEABLE

Uses standard SD CARD memory cards to store images. Kit includes 2gb card.

**SAY NO TO THE RESTRICTIONS OF INTERNAL MEMORY, SAY YES TO UNLIMITED STORAGE!**



### HUGE SCREEN



Don't sacrifice screen size for price. Don't be embarrassed by your screen size. Maximize value with big screen resolution.

**SAY NO TO A CHILDS SCREEN, SAY YES TO THE BIG DOG!**

#### Applications

- Predictive and preventative maintenance
- Electrical inspection
- Building diagnostics
- Technical diagnostics
- Veterinarian helper



**SIERRA PACIFIC INNOVATIONS CORP**  
LAS VEGAS, NEVADA  
PHONE: 702-369-3966 - FAX: 702-369-3977  
WWW.X20.ORG

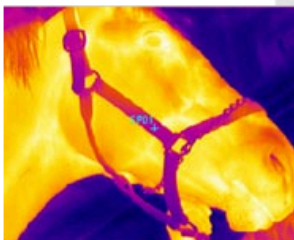
# Specifications



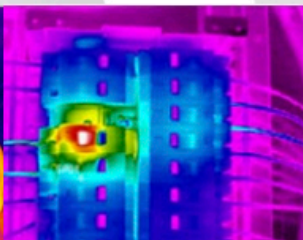
Thermal	
Detector type	Uncooled FPA microbolometer (160× 120 pixels, 25µm)
Thermal Sensitivity	High
Spectral Range	8-14µm
Field of View/ Focus	20.6° X 15.5° / 11mm
Focus	motorized
Image Presentation	
Display	3.6" TFT LCD with high resolution
Measurement	
Temperature Measurement	0°C to 250°C
Accuracy	±2°C or ±2% of reading
Emissivity Correction	Variable from 0.01 to 1.00 (in 0.01 increment)
Measurement Features	Automatic correction based on distance, relative humidity, atmospheric transmission and external optics
Optics Transmission Correction	Auto, based on signals from sensors
Image Storage	
Type	Removable 2GB SD card
File Format	JPG with analysis records
Power System	
Battery Type	AA rechargeable battery, field-replaceable, AA Alkaline battery also usable
Charging System	in battery charger
Battery Operating Time	Over 2 hours continuous operation
External Power Operation	AC adapter 110/ 220 VAC, 50/ 60Hz
Environmental Specification	
Operating Temperature	0°C to 50°C
Storage Temperature	-10°C to 60°C
Humidity	Operating and storing 10% to 95%, non- condensing
Encapsulation	IP43
Shock	Operational 25G, IEC 68-2-29
Vibration	Operational 2G, IEC 68-2-6
Interfaces	
USB 2.0	Real-time image transfer to PC
Physical Characteristics	
Weight	0.73KG (including battery)
Size	111mmx124mmx240mm
Colors	Yellow&grey interlaced or red&dark interlaced alternative

**SIERRA PACIFIC INNOVATIONS CORP - LAS VEGAS, NEVADA**  
**PHONE: 702-369-3966 - FAX: 702-369-3977**  
**WWW.X20.ORG**

## What can you do with a Thermal Camera?



**VETERINARY/MEDICAL**  
 Thermal cameras are used to examine animals and human subjects for a variety of diagnostic protocols.



**ELECTRICAL PDM**  
 Electrical predictive maintenance inspections have been proven time and again to save money and lives.



**PUBLIC SAFETY**  
 Inspect vehicles and surrounding areas for suspicious activity and faulty mechanical equipment.



**ENERGY AUDIT**  
 Scan buildings and homes for expensive HVAC loss. The GREEN application of thermal cameras. Save the Planet with your RAZ-IR MAX-SL.