

See First, Understand First, Act First and Finish Decisively.



WatchMaster® Pro+

The WatchMaster® Pro+ brings military technology to day/night security and force protection surveillance in a small, high value product. WatchMaster® Pro+ has remarkable performance that is built to operate in hostile environments.

Like its uncooled LWIR cousin, the WatchMaster® Pro, the WatchMaster® Pro+ provides high resolution thermal imaging in an easy-to-integrate, easy-to-employ pan-tilt camera system. Additionally, WatchMaster® Pro+ offers the outstanding utility of 12X+ continuous zoom optics and automatic focusing, enabling wide area coverage and up close assessment of distant targets. Further, it employs proven cooled Mercury Cadmium Telluride detector technology with ultra long-life cryogenic coolers for low life-cycle cost.

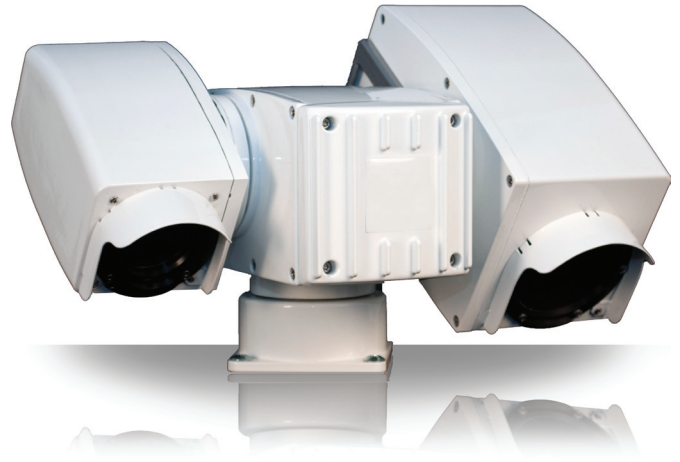
WatchMaster® Pro+ incorporates the Quickset QPT-LT dual side-mount positioner with its color day TV and its agile positioning mechanism. It has a high-rate slew capability, precise fine position control, and multiple communication modalities.

WatchMaster® Pro+ provides exceptional clarity, flexible functionality and extraordinary performance for enhanced 24/7 surveillance capability.



HIGHLIGHTS

- Cooled MCT detector technology
- Compact/Light weight
- Continuous zoom from narrow to wide FOV
- Automatic focus
- Network controllable or dedicated (Unicom® -LT) controller
- Mobile and invertible
- Full two-way communication
- MIL-STD-810F, IP67 (tested), sealed and pressurized camera housings
- Full range of mounting fixtures
- Local Area Processing (image processing mode)
- Improved thermal sensitivity with cooled system



SYSTEM FEATURES

GENERAL

Video Output	RS-170 (NTSC)
Control Interface	RS422/RS485
Power Consumption	10 - 30 VDC with reverse polarity protection
Weight	<30 pounds with dual cameras
Size (W x L x H)	14.9 x 10.5 x 8.1 inches
Enclosures	IP67, sealed and pressurized camera enclosures; marine resistant paint, bearings and gaskets; stainless steel HW, aluminum housings
Operating Temperature	-32° C to 55° C (-26° F to 131° F)
Pan Range	360° continuous
Pan Speed	0.25° - 100°/seconds
Tilt Range	-90° to + 90° non-continuous
Tilt Speed	0.25° - 60°/seconds
Motor Type/Drive	Steppers with belt drive
Microprocessor Control	32 presets and 2 preset tours

THERMAL CAMERA

Detector	Mercury Cadmium Telluride
Frame Rate	30 Hz
Resolution	640 x 480
Spectral Response	MWIR, 3-5 µm
Thermal Sensitivity	30 mK
HFOV	25° - 2° with continuous zoom
Focus	Automatic
Gain/Level	Automatic gain control or manual
Zoom	12.5 continuous optical zoom, 6X digital E-zoom
Performance	8.2 km detection range for standing human (see note 1)
Cooler Life	15,000 hours, typical

CCD CAMERA

Narrow FOV	1.6°
WFOV	42°
Zoom	Optical 26X, digital 12X, total 312X
Minimum Illumination	1.0 lux typical

Note 1 – Performance value shown is for the following conditions: a) target size is 1.8 x 0.5 meters; b) target contrast temperature is 2° C; c) probability of detection is 70%; and d) the atmosphere is described by the 1976 US Standard Model, with the Rural – 23 km Aerosol Model, and low turbulence.

* Specifications subject to change without notice. Export of the commodities described herein is strictly prohibited without a valid export license issued by the U.S. Department of State, Directorate of Defense Trade Controls, prescribed in the International Traffic in Arms Regulations (ITAR), Title 22, Code of Federal Regulation, Parts 120-130.

Unicom is a registered trademark of Quickset International, Inc.



CONTACT:

SPI CORP

DEFENSE IMAGER SUPPORT TEAM

702-369-3966 24 Hour Hotline 702-499-9551
sales@x20.org